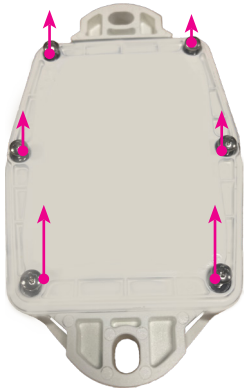


The TRACK 1101 ships with a standard battery pack BAT 8206. Please order these battery packs and replace with these battery packs.



Step 1
Make sure that the serial number and logo are facing the right way up. Then turn the tracker face down. Unscrew the 6 screws.
Tip: If using a power drill, use power setting 7, on low. (Note: not all power drills have the same settings!)

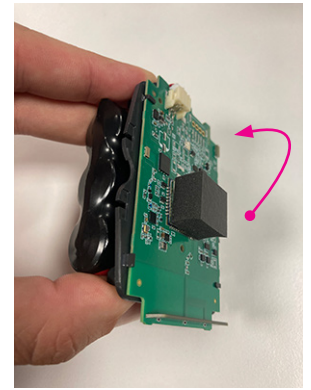


Step 2
Remove the back plate and the 6 screws.



Step 3
Take the module (Battery pack + battery holder + PCB) out of the casing.

You might need to tilt the casing a bit



Step 4
Turn around the module (Battery pack + battery holder + PCB) so the PCB is on top.



Step 5
Lift the module and move the battery pack from the insert to the side.



Step 6
Align the battery pack next to the PCB and insert.



Step 7
Disconnect the battery pack from the PCB. Be careful in disconnecting the battery pack.



Step 8
Connect the new the battery pack to the PCB. A green LED will flash for some seconds.



Step 9
Move the battery pack back under the insert and PCB and flip the module.



Step 10
Align the battery pack onto the insert.

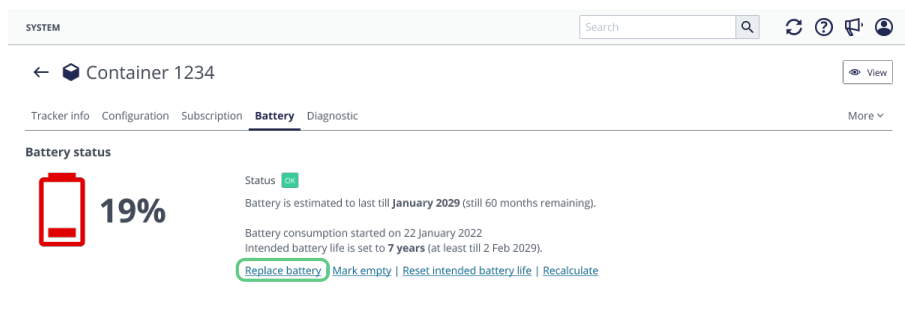


Step 11
Place the module in the tracker. Use the alignment marks on the casing. Do not use force. There is only one way to put the module back in the tracker.



Step 12
Close the tracker carefully. Your tracker is ready to use again.

Indicate battery replaced in platform



When you replaced the battery in the tracker you have to indicate that in the platform.

- Go to the tracker details page in the general section. You can search for this tracker or find in in the asset list or asset map.
- Click on the settings button on the far right
- Go to the battery tab
- Click replace battery

